

# Education Collection

AUDIO/VISUAL MOUNTING SOLUTIONS FOR EDUCATION

peerless®

**Peerless A/V Mounting Solutions Assist Visual Learning in the Classroom  
While Providing Safety and Security for Mounted A/V Equipment**

**WHAT MAKES FOR A GOOD MOUNTING SOLUTION?**

**SAFETY** Virtually all of Peerless' mounting solutions are UL listed. This means our mounts are tested to four times the maximum load capacity to ensure safety. We also offer mounts that are OSPHD approved.

**SECURITY** Peerless mounts include discreet security features that make them highly tamper-resistant. When your audio/visual electronics are in a public or semi-public area, you know the products are securely mounted.

**EASE OF INSTALLATION** Most Peerless mounts come pre-assembled and contain a complete fastener set for easy and fast installation. We offer more mounting accessories than anyone else to meet virtually any installation requirement.

**VERSATILITY AND FUNCTIONALITY** Peerless mounts provide a complete package of safety, security, ease of installation, functionality and a competitive price.



From the classroom to the gymnasium, Peerless Industries, Inc. leads the way in professional-grade audio/visual mounting solutions for today's learning environments. We've been developing innovative, safety-oriented mounting solutions for over 25 years and are known for our unwavering commitment to safety and security. Peerless mounts are the choice solutions trusted to be installed into more schools and universities than any other brand across the country.

Our expertise directly results from ongoing collaboration with partners such as architects, systems integrators, specifiers and installers who work closely with schools and universities across the country. These industry partnerships, coupled with Peerless' experienced Education Sales Team, provide solutions for every learning environment and application.

Whether you are buying mounts through the school bid process, a local dealer or on the Internet, know that Peerless is a brand you can trust. Our dedicated Education Sales Team works with you to provide solutions that place technology in the forefront of any education facility. Insist on Peerless for solutions, world-class support and innovative products for your next project.

Our dedicated Education Sales Team is ready to work with you. Call us at (800) 865-2112 ext.293, email [edu@peerlessmounts.com](mailto:edu@peerlessmounts.com) or visit us at [www.peerlessmounts.com](http://www.peerlessmounts.com)

**TABLE OF CONTENTS**

Universal projector mounts .....	pages 4-5	Corner mounts .....	page 13
Projector mounts .....	page 6	Universal pivot & articulating wall mounts .....	pages 14-15
Short throw projector wall arms .....	page 7	Universal ceiling mounts .....	pages 16-17
Universal flat wall mounts .....	pages 8-9	Universal desktop mounts .....	pages 18-19
Universal tilt wall mounts .....	pages 10-11	Stands and carts .....	page 20
Universal modular tilt wall mount .....	page 12	CRT mounts .....	pages 21
		Accessories .....	pages 22-23

**ICONS USED**



# UNIVERSAL PROJECTOR MOUNTS



**1. PATENT-PENDING PRECISION GEARS**  
Reduces installation time and delivers pin-pointing image alignment with pre-installed, tamper resistant lockdown hardware

**2. PIN-POINT IMAGE ALIGNMENT**  
Achieve pin-point image alignment by simply turning the adjustment knobs by hand or with a Phillips screwdriver

**3. UNIVERSAL COMPATIBILITY**  
Spider® Universal Adapter Plate extends from 17.63" (448 mm) to fit most projector models

**4. SIMPLE FLUSH INSTALLATION**  
Enable fast and easy flush mounting installation with horizontal wrench access slots

## PRG-UNV(-S)[-W]



**COLOR:** Black, silver or white

- Patent-pending precision gear provides exact projector image alignment
- Two adjustment knobs control the projector for a hassle free image alignment
- Cable management allows cables to be routed through projector mount and out of sight
- Pre-installed security hardware at every connection point
- Quick-release for easy projector removal and maintenance
- Kitted with Spider® Universal Adapter Plate
- Mount ships pre-assembled

## PRS-UNV(-S)[-W]



**COLOR:** Black, silver or white

- Multi-axis adjustment points for precise image alignment
- Cable management allows cables to be routed through projector mount and out of sight
- Pre-installed security hardware at every connection point
- Quick-release for easy projector removal and maintenance
- Kitted with Spider® Universal Adapter Plate
- Mount ships pre-assembled

## PJF2-UNV(-S)



**COLOR:** Black or silver

- Single point of adjustment for quick image alignment
- Cable management allows cables to be routed through projector mount and out of sight
- Pre-installed security hardware at every connection point
- Quick-release for easy projector removal and maintenance
- Kitted with Spider® Universal Adapter Plate
- Mount ships pre-assembled

## PRG-CMJ455



**COLOR:** PRG: Black  
CMJ455: White

- Kit includes an 8" (203 mm) x 24" (610 mm) filler tray and a 15.75" (400 mm) x 24" (610 mm) ceiling tray and PRG-UNV
- 1 ½"-1.5 NPS threaded fitting in the ceiling tray serves as the point of attachment for PRG- Precision Gear Projector Mount
- PRG may be attached directly or lowered with the addition of a Peerless Extension Column
- Cable management allows cables to be routed through projector mount and out of sight
- Pre-installed security hardware at every connection point
- Quick-release for easy projector removal and maintenance
- Kitted with Spider® Universal Adapter Plate

## PRG-CMJ500



**COLOR:** PRG: Black  
CMJ500: White

- Unlimited projector placement above a 2' x 2' (.6 x .6 m) or 2' x 4' (.6 x 1.2 m) standard ceiling tile
- Escutcheon ring included for a clean finish
- 1 ½"-1.5 NPS threaded fitting in the ceiling tray serves as the point of attachment for PRG- Precision Gear Projector Mount
- PRG may be attached directly or lowered with the addition of a Peerless Extension Column
- Cable management allows cables to be routed through projector mount and out of sight
- Pre-installed security hardware at every connection point
- Quick-release for easy projector removal and maintenance
- Kitted with Spider® Universal Adapter Plate

## PRG-EXA/EXB/EXC(-S)[-W]



**COLOR:** Black, silver or white

- Continuous channel design for uninterrupted drop length or wall extension adjustments
- Safety catch designed into extension to ensure user and equipment safety
- Mounts to ceiling or wall (depending on model) with included wall mount interface
- Cable management allows cables to be routed through projector mount and out of sight
- Pre-installed security hardware at every connection point
- Quick-release for easy projector removal and maintenance
- Kitted with Spider® Universal Adapter Plate

Accessories ..... pages 22-23

Adjustable mounting pattern	up to 17.63" (448 mm)	up to 17.63" (448 mm)	up to 17.63" (448 mm)
Distance from the ceiling	—	—	—
Distance from the wall	—	—	—
Tilt   swivel   roll	±20°   360° (±15° when flush mounted)   ±10°	+5/-20°   360° (±30° when flush mounted)   ±10°	±15°   360°   ±15°
Security	Yes	Yes	Yes
Max load	50 lb (22 kg)	25 lb (11 kg)	50 lb (22 kg)
UL   TUV   GS	UL   TUV   GS	UL   TUV   GS	UL   TUV   GS

up to 17.63" (448 mm)	up to 17.63" (448 mm)	up to 17.63" (448 mm)
—	—	PRG-EXA: 8.7"-12.8" (221-325 mm) PRG-EXB: 12.68"-20.67" (322-525 mm) PRG-EXC: 19.13"-32.91" (486-836 mm)
—	—	PRG-EXA: 9.72"-13.86" (247-352 mm) PRG-EXB: 13.74"-21.73" (349-552 mm)
±20°   360°   ±10°	±20°   360°   ±10°	±20°   360°   ±10°
Yes	Yes	Yes
50 lb (22 kg)	50 lb (22 kg)	50 lb (22 kg)
UL	UL	UL   TUV   GS

# PROJECTOR MOUNTS



### 1. ACCESS HOLE FOR CABLE ROUTING

Provides a clean finished installation, routing cables through the projector mount and out of sight

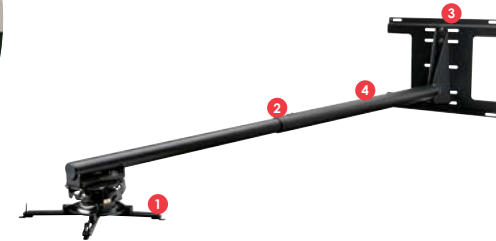
### 2. EASY ACCESS HINGE DESIGN

Provides quick, hassle-free projector removal for any maintenance

### 3. KEY-LOCK SECURITY

Prevents theft and eliminates tampering of the projector

# SHORT THROW PROJECTOR MOUNTS



### 1. UNIVERSAL DESIGN

Comes kitted with Peerless' PRG-UNV allowing for hassle-free image alignment and Peerless' Spider Universal Adapter Plate providing compatibility with virtually any projector

### 2. LOCKDOWN SECURITY HARDWARE

Security hardware provided to lock-down the short throw projector mount at every point

### 3. MOUNTING FLEXIBILITY

Double stud wall plate allows for 6" (152 mm) of horizontal adjustability, allowing for optimal arm alignment

### 4. TELESCOPIC ARM

Short throw arm collapses and expands to fit a large array of short throw projectors

## PSM-UNV(-S)[-W]



**COLOR:** Black, silver or white

- Includes PJF2 Projector Mount
- Two-piece tray design prevents access to projector
- Cable management allows cables to be routed through projector mount and out of sight
- Key-lock security for theft deterrence
- Slide-out tray for quick projector removal
- Universal tray pattern accommodates most projectors

## PSMU-PRS(-S)[-W]



**COLOR:** Black, silver or white

- Includes PRS Series Projector Mount
- Two-piece tray design prevents access to projector
- Cable management allows cables to be routed through projector mount and out of sight
- Key-lock security for theft deterrence
- Slide-out tray for quick projector removal
- Universal tray pattern accommodates most projectors

## PE1120(-W)



**COLOR:** Black or white

- Fits projectors up to 20"W x 18"D x 10"H (508 x 457 x 254 mm)
- 3-step installation
- Adjustable pipe clamp fits 1" NPT to 1-1/2" NPT pipe
- "Hook-n-Hang" feature allows hands-free operation during projector installation or maintenance
- Peerless exclusive security hardware included to prevent any tampering
- Mounts flush to ceiling or drop mounted from extension pipe

Accessories ..... pages 22-23

## PSTA/PSTK-028(-W)



**COLOR:** Black or white

- Kitted with Peerless' Universal Precision Gear Projector Mount (PRG-UNV), patent-pending precision gears that provide exact projector image alignment
- Sliding carriage design allows projector mount to glide into place at any location on the short throw arm
- Multiple access slots allow for all internal cable management
- Double stud wall plate allows for 6" (152 mm) of lateral adjustment for precise alignment of the ultra-short throw projector (PSTK Model Only)
- Pre-installed security screws lockdown short throw arm and prevent tampering

## PSTA/PSTK-2955(-W)



**COLOR:** Black or white

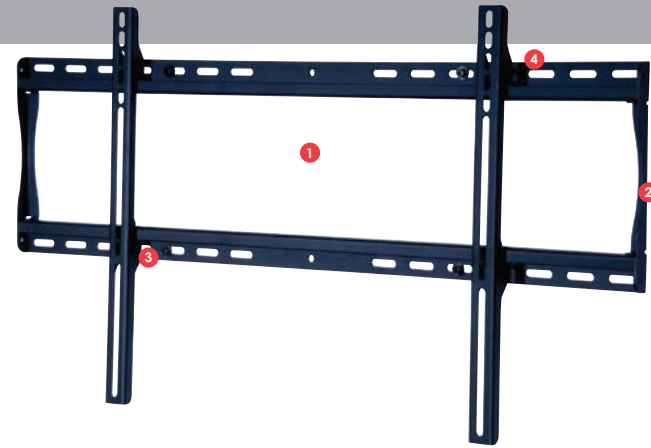
- Kitted with Peerless' Universal Precision Gear Projector Mount (PRG-UNV), patent-pending precision gears that provide exact projector image alignment
- Telescoping arm design provides a large range of mounting options with convenient lockdown slots at every point
- Multiple access slots allow for all internal cable management
- "Hook-n-Hang" feature allows hands-free operation during projector installation or maintenance
- Double stud wall plate allows for 6" (152 mm) of lateral adjustment for precise alignment of the ultra-short throw projector (PSTK Model Only)
- Pre-installed security screws lockdown short throw arm and prevent tampering

Accessories ..... pages 22-23

Adjustable mounting pattern	14.25" x 12.82" (361 x 325 mm) Tray	14.25" x 12.82" (361 x 325 mm) Tray	—
Distance from the ceiling	—	—	12.57" (323 mm)
Tilt   swivel   roll	±15°   360°   ±15°	+5/-20°   360° (±30° when flush mounted)   ±10°	—
Security	Yes	Yes	Yes
Max load	50 lb (22 kg)	25 lb (11 kg)	—
UL   TUV   GS	UL	UL	—

Adjustable mounting pattern	up to 17.63" (448 mm)	up to 17.63" (448 mm)
Distance from the wall	0"-28" (0-711 mm)	29"-55" (736-1397 mm)
Tilt   swivel   roll	±20°   360°   ±10°	±20°   360°   ±10°
Security	Yes	Yes
Max load	50 lb (22 kg)	35 lb (15 kg)
UL   TUV   GS	UL   TUV   GS	UL   TUV   GS

# UNIVERSAL FLAT WALL MOUNTS



**1. OPEN ARCHITECTURE**  
Offers outstanding flexibility in mount placement by easily accommodating cables, cords, and electrical gang boxes

**2. FINISHED END PANEL**  
Unique end panel design creates a clean appearance by hiding screws from view

**3. SECUREMENT SCREWS**  
Assures the screen is secured to the wall plate, preventing the screen from accidentally being dislodged

**4. LOW-PROFILE DESIGN**  
Keeps screen close to the wall for a discreet installation

SmartMount®

## SF630(S)



**COLOR:** Black or silver

- Screen adapter plate simply hooks onto the wall plate for quick and easy installation
- Includes hardware for installation to wood stud, concrete, cinder block and metal stud (metal stud accessory required)\*

\*ACC215

## SF632(S)



**COLOR:** Black or silver

- Screen adapter plate simply hooks onto the wall plate for quick and easy installation
- Includes hardware for installation to wood stud, concrete, cinder block and metal stud (metal stud accessory required)\*

\*ACC215

## SF640(S)



**COLOR:** Black or silver

- Open wall plate design allows for total wall access, increasing electrical access and cable management options
- Universal adapters easily hook onto wall plate for fast installation
- Includes hardware for installation to wood stud, concrete, cinder block and metal stud (metal stud accessory required)\*
- Comes with Peerless' Sorted-For-You™ fastener pack with all necessary screen attachment hardware

\*ACC415

## SF650(S)



**COLOR:** Black or silver

- Open wall plate design allows for total wall access, increasing electrical access and cable management options
- Universal adapters easily hook onto wall plate for fast installation
- Includes hardware for installation to wood stud, concrete, cinder block and metal stud (metal stud accessory required)\*
- Comes with Peerless' Sorted-For-You™ fastener pack with all necessary screen attachment hardware

\*ACC415

## SF660(S)



**COLOR:** Black or silver

- Open wall plate design allows for total wall access, increasing electrical access and cable management options
- Universal adapters easily hook onto wall plate for fast installation
- Includes hardware for installation to wood stud, concrete, cinder block and metal stud (metal stud accessory required)\*
- Comes with Peerless' Sorted-For-You™ fastener pack with all necessary screen attachment hardware

\*ACC415

## SF670(S)



**COLOR:** Black or silver

- Universal adapters easily hook onto wall plate for fast installation
- Easy-glide design ensures screen is securely attached to wall plate
- Mounts to wood studs, concrete, cinder block or metal studs (metal stud accessory required)\*
- Includes Peerless' Sorted-For-You™ fastener pack with all necessary mounting and screen attachment hardware

\*ACC615

## SF680(S)



**COLOR:** Black or silver

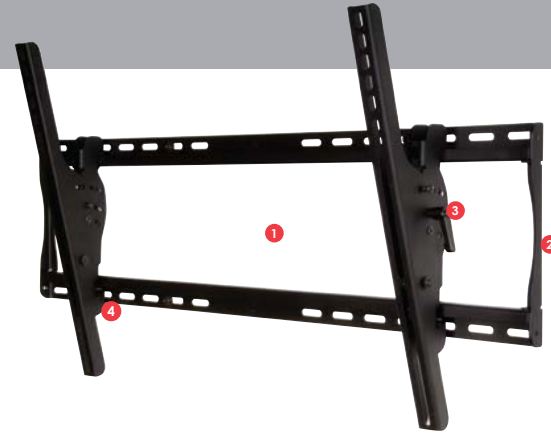
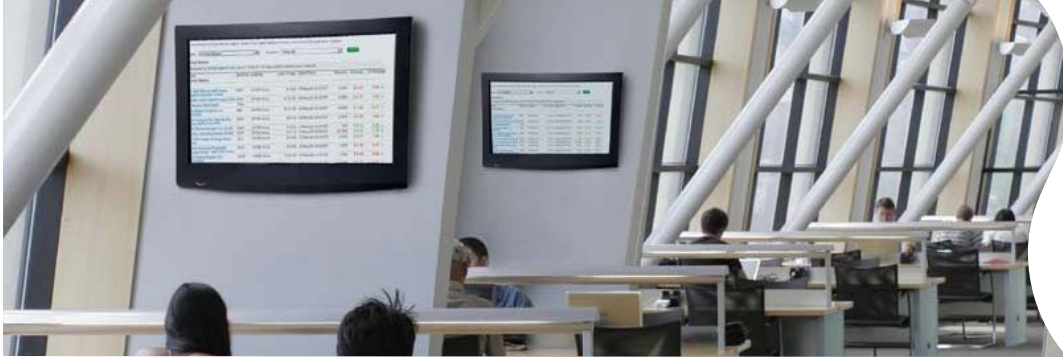
- Universal adapters easily hook onto wall plate for fast installation
- Easy-glide design ensures screen is securely attached to wall plate
- Mounts to wood studs, concrete, cinder block or metal studs (metal stud accessory required)\*
- Includes Peerless' Sorted-For-You™ fastener pack with all necessary mounting and screen attachment hardware

\*ACC615

Accessories ..... pages 22-23

	SF630(S)	SF632(S)	SF640(S)	SF650(S)	SF660(S)	SF670(S)	SF680(S)
Screen size	10"-24" (25-61 cm)	22"-40" (56-102 cm)	23"-46" (58-112 cm)	32"-56" (81-142 cm)	37"-63" (94-160 cm)	42"-71" (107-180 cm)	61"-102" (155-259 cm)
VESA® pattern	75/100 mm <i>Additional screen adapter plates also available</i>	75, 100, 200 x 100 and 200 x 200 mm <i>Additional screen adapter plates also available</i>	—	—	up to 800 x 400 mm	—	—
Adjustable mounting pattern (W x H)	—	—	17.73" x 12.94" (450 x 329 mm)	29.23" x 17.05" (784 x 433 mm)	32.48" x 17.05" (825 x 433 mm)	35.75" x 19.8" (909 x 504 mm)	43.75" x 29.31" (1111 x 744 mm)
Distance from the wall	1" (25 mm)	1.1" (28 mm)	1.2" (30 mm)	1.7" (43 mm)	1.2" (30 mm)	1.73" (44 mm)	1.83" (46 mm)
Horizontal screen adjustment	—	—	up to 6" (152 mm)	up to 8" (203 mm)	up to 8" (203 mm)	up to 8" (203 mm)	up to 8" (203 mm)
Security	Yes	Yes	Yes	Yes	Yes	Yes	Yes
Max load	80 lb (36 kg)	115 lb (52 kg)	150 lb (68 kg)	175 lb (79 kg)	200 lb (90 kg)	250 lb (113 kg)	350 lb (158 kg)
UL   TUV   GS	UL   TUV   GS	UL   TUV   GS	UL   TUV   GS	UL   TUV   GS	UL   TUV   GS	UL   TUV   GS	UL   TUV   GS

# UNIVERSAL TILT WALL MOUNTS



**1. OPEN ARCHITECTURE**  
Offers outstanding flexibility in mount placement by easily accommodating cables, cords, and electrical gang boxes

**2. FINISHED END PANEL**  
Unique end panel design creates a clean appearance by hiding screws from view

**3. EASY TILT ADJUSTMENT**  
The TV is supported by pre-finished tilt adapters that allow for +15°/-5° tilt adjustment in one easy motion

**4. SECUREMENT SCREWS**  
Assures the TV is secured to the wall plate, preventing the screen from accidentally being dislodged

SmartMount®

**ST630(S)**



**COLOR:** Black or silver

- Screen adapter plate simply hooks onto the wall plate for quick and easy installation
- Includes hardware for installation to wood stud, concrete, cinder block and metal stud (metal stud accessory required)\*

\*ACC215

**ST632(S)**



**COLOR:** Black or silver

- Screen adapter plate simply hooks onto the wall plate for quick and easy installation
- Includes hardware for installation to wood stud, concrete, cinder block and metal stud (metal stud accessory required)\*

\*ACC215

**ST635(S)**



**COLOR:** Black or silver

- Open wall plate design allows for total wall access, increasing electrical access and cable management options
- Universal adapters easily hook onto wall plate for fast installation
- Includes hardware for installation to wood stud, concrete, cinder block and metal stud (metal stud accessory required)\*
- Comes with Peerless® Sorted-For-You™ fastener pack with all necessary screen attachment hardware

\*ACC215

**ST640(S)**



**COLOR:** Black or silver

- Open wall plate design allows for total wall access, increasing electrical access and cable management options
- Universal adapters easily hook onto wall plate for fast installation
- Includes hardware for installation to wood stud, concrete, cinder block and metal stud (metal stud accessory required)\*
- Comes with Peerless® Sorted-For-You™ fastener pack with all necessary screen attachment hardware

\*ACC415

**ST650(S)**



**COLOR:** Black or silver

- Open wall plate design allows for total wall access, increasing electrical access and cable management options
- Universal adapters easily hook onto wall plate for fast installation
- Includes hardware for installation to wood stud, concrete, cinder block and metal stud (metal stud accessory required)\*
- Comes with Peerless® Sorted-For-You™ fastener pack with all necessary screen attachment hardware

\*ACC415

**ST660(S)**



**COLOR:** Black or silver

- Open wall plate design allows for total wall access, increasing electrical access and cable management options
- Universal adapters easily hook onto wall plate for fast installation
- Includes hardware for installation to wood stud, concrete, cinder block and metal stud (metal stud accessory required)\*
- Comes with Peerless® Sorted-For-You™ fastener pack with all necessary screen attachment hardware

\*ACC415

**ST670(S)**



**COLOR:** Black or silver

- Universal adapters easily hook onto wall plate for fast installation
- Easy-glide design ensures screen is securely attached to wall plate
- Mounts to wood studs, concrete, cinder block or metal studs (metal stud accessory required)\*
- Includes Peerless® Sorted-For-You™ fastener pack with all necessary mounting and screen attachment hardware

\*ACC615

**ST680(S)**



**COLOR:** Black or silver

- Universal adapters easily hook onto wall plate for fast installation
- Easy-glide design ensures screen is securely attached to wall plate
- Mounts to wood studs, concrete, cinder block or metal studs (metal stud accessory required)\*
- Includes Peerless® Sorted-For-You™ fastener pack with all necessary mounting and screen attachment hardware

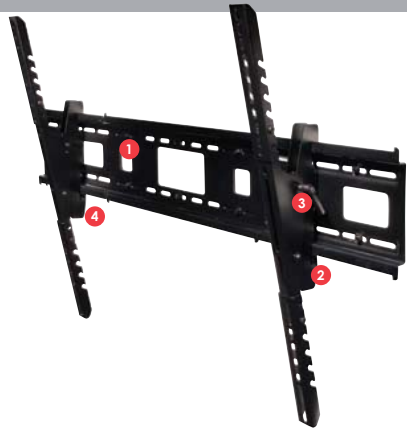
\*ACC615

Accessories ..... pages 22-23

Screen size	10"-24" (25-61 cm)	22"-40" (56-102 cm)	13"-37" (33-94 cm)	23"-46" (58-117 cm)
VESA® pattern	75/100 mm	75, 100, 200 x 100 and 200 x 200 mm	75, 100, 200 x 100 and 200 x 200 mm	—
Adjustable mounting pattern (W x H)	—	—	9.63" x 9.45" (244 x 240 mm)	18" x 12.94" (457 x 328 mm)
Distance from the wall	1.58" (40 mm)	1.66" (42 mm)	2.6" (66 mm)	2.6" (66 mm)
Tilt	+15°/-5°	+15°/-5°	+15°/-5°	+15°/-5°
Increlock™	—	—	-5°, 0°, 5°, 10°, 15°	-5°, 0°, 5°, 10°, 15°
Horizontal screen adjustment	—	—	—	up to 6" (152 mm)
Security	Yes	Yes	Yes	Yes
Max load	80 lb (36 kg)	115 lb (52 kg)	125 lb (56 kg)	150 lb (68 kg)
UL   TUV   GS	UL   TUV   GS	UL   TUV   GS	UL   TUV   GS	UL   TUV   GS

	32"-56" (81-142 cm)	37"-63" (94-160 cm)	42"-71" (107-180 cm)	61"-102" (455-259 cm)
	—	up to 800 x 400 mm	—	—
	29.5" x 17.67" (749 x 449 mm)	32.75" x 17.67" (832 x 449 mm)	36.03" x 19.8" (915 x 503 mm)	44.04" x 29.31" (1119 x 744 mm)
	2.6" (66 mm)	2.6" (66 mm)	3" (77 mm)	3" (77 mm)
	+15°/-5°	+15°/-5°	+15°/-5°	+15°/-5°
	-5°, 0°, 5°, 10°, 15°	-5°, 0°, 5°, 10°, 15°	-5°, 0°, 5°, 10°, 15°	-5°, 0°, 5°, 10°, 15°
	up to 8" (203 mm)	up to 8" (203 mm)	up to 8" (203 mm)	up to 8" (203 mm)
	Yes	Yes	Yes	Yes
	175 lb (79 kg)	200 lb (90 kg)	250 lb (113 kg)	350 lb (158 kg)
	UL   TUV   GS	UL   TUV   GS	UL   TUV   GS	UL   TUV   GS

# UNIVERSAL MODULAR TILT WALL MOUNT



- 1. MODULAR DESIGN**  
Expands to accommodate 23" to 84" (58-213 cm) LCD or plasma flat panel TVs
- 2. SECUREMENT SCREWS**  
Assures the TV is secured to the wall plate, preventing the screen from accidentally being dislodged
- 3. ONE-TOUCH TILT**  
Allows the TV to be adjusted 15 degrees forward and 5 degrees back to find the optimal viewing angle
- 4. EASY-GLIDE DESIGN**  
Ensures the TV is securely attached to the wall plate for easy installation and safety

# CORNER MOUNTS



- 1. MOUNTING FLEXIBILITY**  
Designed to accommodate single or double-stud mounting
- 2. EXTENSIBILITY**  
Upgrading to a larger TV is easy, simply extend the arms, mount the larger TV -- no need to re-mount the wall plate
- 3. UNIVERSAL DESIGN**  
Accommodates virtually all TVs with 28.75"W by 17.05"H (730 x 433 mm) mounting holes
- 4. ACCESSORIZING**  
It is quick and simple to add A/V shelving, supports up to 25 lb (11 kg) per shelf

**ONEMount™**  
**ONEModel**  
**ONEBox**  
**ONESolution**

## ONE-TP(S)

### 1-PLATE CONFIGURATION



\*ACC415

### 2-PLATE CONFIGURATION



\*ACC415

### 3-PLATE CONFIGURATION



\*ACC165

**COLOR:** Black or silver

- Modular design expands to accommodate 23" to 84" (58-213 cm) LCD or plasma flat panel TVs
- Hook-on design for easy installation
- Pre-assembled adapters and built-in center plate screws make installation quick and simple
- Includes hardware for installation to wood stud, concrete, cinder block and metal stud (metal stud accessory required)\*

Accessories ..... pages 22-23

## CM50(S)



**COLOR:** Black or silver

- Wall units expand to support compatible flat/tilt wall mounts for LCD or plasma flat panel TVs from 32"-50" (81-127 cm)
- Accommodates Peerless® flat/tilt wall mounts SF640, ST640, SF650, ST650, PF640, PT640, PF650, PT650 & ONE-TP
- Wall units accommodate speakers when used with smaller TVs (wall unit maybe visible with some smaller screens)
- Optional shelf available for A/V components (ACC324)
- Includes hardware for installation to wood stud, concrete and cinder block

## CM60(S)



**COLOR:** Black or silver

- Wall units expand to support compatible flat/tilt wall mounts for LCD or plasma flat panel TVs from 40"-60" (101-152 cm)
- Accommodates Peerless® flat/tilt wall mounts SF640, ST640, SF650, ST650, SF660, ST660, PF640, PT640, PF650, PT650, PF660, PT660 & ONE-TP
- Wall units accommodate speakers when used with smaller TVs (wall unit maybe visible with some smaller screens)
- Optional shelf available for A/V components (ACC324)
- Includes hardware for installation to wood stud, concrete and cinder block

## CM850(S)



**COLOR:** Black or silver

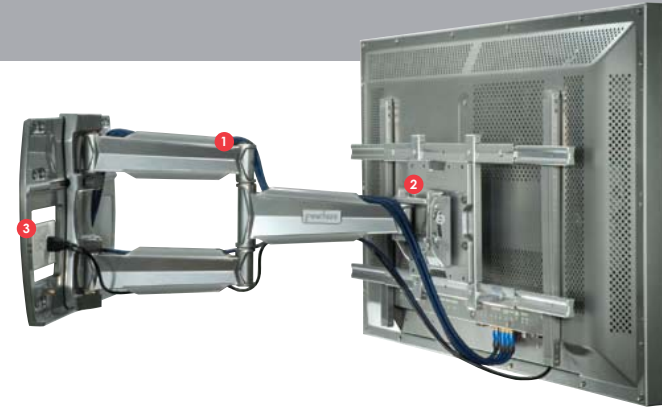
- Includes SmartMount® Pull-Out Swivel Mount (SP850-UNI)
- Extendable arms accommodate multiple TV sizes without having to adjust wall mount placement
- Wall units accommodate speakers when used with smaller TVs (wall unit maybe visible with some smaller screens)
- Optional shelf available for A/V components (ACC324)
- Includes hardware for installation to wood stud, concrete and cinder block

Accessories ..... pages 22-23

Screen size	23"-46" (58-117 cm)	32"-60" (81-152 cm)	42"-84" (106-213 cm)
Adjustable mounting pattern (W x H)	17" x 26.5" (432 x 673 mm)	29" x 26.5" (737 x 673 mm)	40.8" x 26.5" (1087 x 673 mm)
Distance from the wall	3.3" (84 mm)	3.3" (84 mm)	3.3" (84 mm)
Tilt	+15°/-5°	+15°/-5°	+15°/-5°
Increlock™	-5°, 0°, 5°, 10°, 15°	-5°, 0°, 5°, 10°, 15°	-5°, 0°, 5°, 10°, 15°
Horizontal screen adjustment	Up to 6" (152 mm)	Up to 8" (203 mm)	Up to 8" (203 mm)
Security	ACC925	ACC925	ACC925
Max load	250 lb (113 kg)	250 lb (113 kg)	250 lb (113 kg)
UL   TUV   GS	UL   TUV   GS	UL   TUV   GS	UL   TUV   GS

Screen size	32"-50" (81-127 cm)	40"-60" (101-152 cm)	32"-58" (81-147 cm)
Adjustable mounting pattern (W x H)	Refer to compatible Peerless flat/tilt wall mount	Refer to compatible Peerless flat/tilt wall mount	28.75" x 17.05" (730 x 433 mm)
Distance from the corner	22.63"-35.36" (574-898 mm)	28.28"-42.43" (718-1077 mm)	22.63"-41.01" (574-1041 mm)
Tilt   swivel   roll	Refer to compatible Peerless flat/tilt wall mount	Refer to compatible Peerless flat/tilt wall mount	+10°   ±45°   ±1°
Increlock™	Refer to compatible Peerless flat/tilt wall mount	Refer to compatible Peerless flat/tilt wall mount	10°, 5°, 0°
Horizontal screen adjustment	Refer to compatible Peerless flat/tilt wall mount	Refer to compatible Peerless flat/tilt wall mount	3.5" (89 mm)
Security	Yes	Yes	Yes
Max load	175 lb (79 kg)	200 lb (90 kg)	150 lb (68 kg)
UL   TUV   GS	UL   TUV   GS	UL   TUV   GS	UL   TUV   GS

# UNIVERSAL PIVOT & ARTICULATING WALL MOUNTS



**1. CLEAN APPLICATION**  
With 1" (25.4 mm) of clearance per cable management channel, this solution delivers clean, clutter-free aesthetics

**2. EXTENSIVE REACH**  
Extends all the way out to 76.2 cm (30") from the wall and swivels ±90 degrees to easily achieve the perfect viewing position from anywhere in the room

**3. INSTALLATION CONVENIENCE IN THE WALL PLATE**  
Wall plate provides up to 10.75" (273.1 mm) of horizontal TV adjustment and optimal space for placement of gang boxes with up to four outlets

## SmartMount®

Visit [www.peerelessmounts.com](http://www.peerelessmounts.com) for an expanded selection of Pivot & Articulating Wall Mounts including:

### Pivot Wall Mounts

SP730P(S) ..... for 10" to 22" (25-55 cm) screens  
 SP740P(S) ..... for 22" to 40" (55-101 cm) screens  
 SP850-UNL(P)(S)(GB)(GS) ..... for 32" to 58" (81-147 cm) screens  
 PS-1 ..... for 32" to 50" (81-127 cm) screens

### Articulating Wall Mounts

SA730P(S) ..... for 10" to 22" (25-55 cm) screens  
 SA740P(S) ..... for 22" to 40" (55-101 cm) screens  
 SA745PU(S) ..... for 32" to 45" (81-114 cm) screens  
 SA750PU(S) ..... for 32" to 50" (81-127 cm) screens  
 SA760PU(S) ..... for 37" to 63" (93-160 cm) screens  
 SA770PU(S) ..... for 37" to 71" (93-180 cm) screens

Accessories ..... pages 22-23

**SP740P(S)**



**COLOR:** Black or silver

- Two tensionable pivot points for virtually limitless adjustment
- Includes hardware for installation to wood stud, concrete, cinder block and metal stud (metal stud accessory required)\*
- Additional accessory for theft resistance available

**SP850-UNL(P)(S)(GB)(GS)**



**COLOR:** Black, silver, high gloss black or high gloss silver

- Integrated cable management for a clean look
- Locking tab provides optional swivel restriction to one side
- Lock Key™ installation tool secures arms for easy screen installation
- Lock-out feature prevents unwanted extension
- Includes hardware for installation to wood stud, concrete or cinder block

**PS-1**



**COLOR:** Black

- Enables tool-free leveling adjustment of flat panel to sit level at any angle
- Screens are mountable in both portrait and landscape orientations
- Requires the purchase of a screen-specific PLP adapter plate

\*WSP49(S)

**SA740P(S)**



**COLOR:** Black or silver

- Three pivot points for virtually limitless adjustment that can be lightened to restrict movement
- Internal cable management conceals cables for a clean look
- Includes hardware for installation to wood stud, concrete, cinder block and metal stud (metal stud accessory required)\*
- Additional accessory for theft resistance available

**SA745PU(S)**



**COLOR:** High gloss black or high gloss silver

- 1" (25.4 mm) clearance per channel for clean cable management
- Built-in cable ties control cables with movement of arm
- Includes hardware for installation to wood stud, concrete, cinder block and metal stud (metal stud accessory required)\*

**SA750PU(S)**



**COLOR:** High gloss black or high gloss silver

- 1" (25.4 mm) clearance per channel for clean cable management
- Built-in cable ties control cables with movement of arm
- Two knockouts in wall plate for optimal electrical access
- Includes hardware for installation to wood stud, concrete, cinder block and metal stud (metal stud accessory required)\*

**SA770PU(S)**



**COLOR:** High gloss black or high gloss silver

- 1" (25.4 mm) clearance per channel for clean cable management
- Dual-arm construction for strength and enhanced ease of motion
- Built-in cable ties control cables with movement of arm
- Two knockouts in wall plate for optimal electrical access
- Includes hardware for installation to wood stud, concrete, cinder block and metal stud (metal stud accessory required)\*

\*WSP models      \*WSP745(S)      \*ACC615      \*ACC615

	22"-40" (55-101 cm)	32"-58" (81-147 cm)	32"-50" (81-127 cm)	22"-40" (55-101 cm)	32"-45" (81-114 cm)	32"-50" (81-127 cm)	37"-71" (93-180 cm)
Screen size	22"-40" (55-101 cm)	32"-58" (81-147 cm)	32"-50" (81-127 cm)	22"-40" (55-101 cm)	32"-45" (81-114 cm)	32"-50" (81-127 cm)	37"-71" (93-180 cm)
VESA® pattern	75/100, 200 x 100 and 200 x 200 mm <i>Additional screen adapter plates also available</i>	100, 200 x 100 mm	—	75/100, 200 x 100 and 200 x 200 mm <i>Additional screen adapter plates also available</i>	100, 200 x 100 and 200 x 200 mm	100, 200 x 100 and 200 x 200 mm	100, 200 x 100 and 200 x 200 mm
Adjustable mounting pattern (W x H)	<i>Requires screen specific PLP adapter plate</i>	28.7" x 17" (729 x 431.8 mm)	<i>Requires screen specific PLP adapter plate</i>	<i>Requires screen specific PLP adapter plate</i>	30.13" x 17.24" (765.3 x 437.9 mm)	30.13" x 17.24" (765.3 x 437.9 mm)	43.13" x 26" (1095.5 x 660.4 mm)
Distance from the wall	2.97"-10.05" (75.4-255.3 mm)	3.4"-11.9" (86.4-302.3 mm)	8.75" (222 mm)	2.72"-20.19" (69-512.8 mm)	6.8"-29.8" (172.7-757 mm)	6.8"-29.8" (172.7-757 mm)	6.8"-29.8" (172.7-757 mm)
Tilt   swivel   roll	+15°/-5°   ±90°   ±5°	+0°, +5°, +10°   ±45°   ±1°	+10°/-5°   ±15°	+15°/-5°   ±90°   ±7°	+15°/-5°   ±90°   ±2.5°	+15°/-5°   ±90°   ±2.5°	+15°/-5°   ±45°   ±2.5°
Horizontal screen adjustment	—	3.5" (88.9 mm)	—	—	—	10.75" (273.1 mm)	7.75" (196.9 mm)
Landscape to portrait	—	—	Yes	—	Yes	Yes	Yes
Security	ACC919	Yes	Yes	ACC919	ACC925	ACC925	ACC925
Max load	80 lb (36.2 kg)	150 lb (68 kg)	150 lb (68 kg)	80 lb (36.2 kg)	90 lb (40.8 kg) <i>(110 lb/49.9 kg with metal stud accessory)</i>	150 lb (68 kg) <i>(110 lb/49.9 kg with metal stud accessory)</i>	200 lb (90.71 kg) <i>(125 lb/56.9 kg with metal stud accessory)</i>
UL   TUV   GS	UL   TUV   GS	UL   TUV   GS	UL	UL   TUV   GS	UL   TUV   GS	UL   TUV   GS	UL   TUV   GS

# UNIVERSAL CEILING MOUNTS



**1. ACHIEVE IDEAL PLACEMENT**  
Adjustable height ranges for optimal TV placement

**2. CLEAN LOOK**  
Internal cable management channels conceal signal and power cables for a clean installation

**3. ADDED PEACE-OF-MIND**  
Built-in safety catch ensures proper use of height adjustment feature

## LCC-18-[C](S)



**COLOR:** Black or silver

- Adjustable height ranges in 1" (25 mm) increments
- TV can be mounted in standard position or face-down
- Optional cable management covers ("C" models only)
- Mounts to wood joist or concrete

## LCC-36-[C](S)



**COLOR:** Black or silver

- Adjustable height ranges in 1" (25 mm) increments
- TV can be mounted in standard position or face-down
- Optional cable management covers ("C" models only)
- Mounts to wood joist or concrete

## PLCM-UNL-CP



**COLOR:** Black

- Simple hook-on TV installation
- Integrated cable management for clean look
- Mounts to wood joist or concrete

## PC930A/PC930B/PC930C[-S](-W)



**COLOR:** Black, silver or white

- Comes in three adjustable height ranges for optimal viewing
- Continuous tilt with optional lock in 5 degree increments for easy viewing angle adjustment
- Internal cable management allows cables to be routed through extension column for a clean, clutter-free installation
- Safety catch designed into extension channels to ensure user and equipment safety
- Mounts to wood joist or concrete

## PC932A/PC932B/PC932C[-S](-W)



**COLOR:** Black, silver or white

- Comes in three adjustable height ranges for optimal viewing
- Continuous tilt with optional lock in 5 degree increments for easy viewing angle adjustment
- Internal cable management allows cables to be routed through extension column for a clean, clutter-free installation
- Safety catch designed into extension channels to ensure user and equipment safety
- Mounts to wood joist or concrete

Screen size	13"-29" (33-73 cm)	13"-29" (33-73 cm)	32"-60" (81-152 cm)
VESA® pattern	75/100 mm <i>Additional non-VESA® screen adapter plates also available</i>	75/100 mm <i>Additional non-VESA® screen adapter plates also available</i>	—
Adjustable mounting pattern (W x H)	—	—	28.75" x 17.05" (730 x 433 mm)
Distance from the ceiling	19.35"-32.35" (491-821 mm)	36.85"-49.85" (935-1266 mm)	42.63" (1082 mm)
Tilt   swivel	+20°/-5°   360°	+20°/-5°   360°	+20°   360°
Increlock™	—	—	—
Landscape to portrait	Yes	Yes	—
Security	Yes	Yes	Yes
Max load	40 lb (18 kg)	40 lb (18 kg)	200 lb (90 kg)
UL   TUV   GS	UL   TUV   GS	UL   TUV   GS	UL   TUV   GS

15"-24" (38-60 cm)			15"-37" (38-93 cm)		
75/100 mm			75, 100, 200 x 100 and 200 x 200 mm		
—			—		
9.8"-13.9" (248-353 mm) <i>PC930A models</i>	13.78"-21.89" (350-556 mm) <i>PC930B models</i>	20.24"-34.02" (514-864 mm) <i>PC930C models</i>	9.8"-13.9" (248-353 mm) <i>PC932A models</i>	13.78"-21.89" (350-556 mm) <i>PC932B models</i>	20.24"-34.02" (514-864 mm) <i>PC932C models</i>
+15°/-5°   360°			+15°/-5°   360°		
0°, 5°, 10°, 15°			0°, 5°, 10°, 15°		
Yes			Yes		
Yes			Yes		
50 lb (22 kg)			80 lb (36 kg)		
UL   TUV   GS			UL   TUV   GS		

# UNIVERSAL DESKTOP MOUNTS



**1. TILTS AND PIVOTS**  
To provide virtually limitless viewing angles

**2. PERFECT MONITOR POSITION**  
Move the screen to the ideal height with one smooth motion

**3. CABLE MANAGEMENT**  
Delivers a clean, clutter-free look to any installation

**3. MOUNTING OPTIONS FOR ALL SURFACES**  
Desk clamp and desk bolt both available

## LCT-A1B1H/C Two-link Articulating Arm



LCT-A1B1H      LCT-A1B1C

**COLOR:** Silver

- Option of desk clamp or desk bolt to allow for mounting solutions in all surface types
- Limitless screen positioning maximizes work space and provides ideal viewing positioning
- Spring-loaded design allows for smooth motion of arm for adjustability
- Internal cable management for clean finished look

## LCT-A1B2H/C One-link Pivot Arm

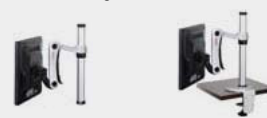


LCT-A1B2H      LCT-A1B2C

**COLOR:** Silver

- Option of desk clamp or desk bolt to allow for mounting solutions in all surface types
- Limitless screen positioning maximizes work space and provides ideal viewing positioning
- Spring-loaded design allows for smooth motion of arm for adjustability
- Internal cable management for clean finished look

## LCT-A1B3H/C Two-link Articulating Pole



LCT-A1B3H      LCT-A1B3C

**COLOR:** Silver

- Option of desk clamp or desk bolt to allow for mounting solutions in all surface types
- Limitless screen positioning maximizes work space and provides ideal viewing positioning
- Spring-loaded design allows for smooth motion of arm for adjustability
- Cable management for clean finished look

## LCT-A1B5H/C One-link Pivot Pole



LCT-A1B5H      LCT-A1B5C

**COLOR:** Silver

- Option of desk clamp or desk bolt to allow for mounting solutions in all surface types
- Limitless screen positioning maximizes work space and provides ideal viewing positioning
- Pole mount design allows for hassle free height adjustability
- Cable management for clean finished look

## LCT-A1B6H/C Two-link Articulating Pole



LCT-A1B6H      LCT-A1B6C

**COLOR:** Silver

- Option of desk clamp or desk bolt to allow for mounting solutions in all surface types
- Limitless screen positioning maximizes work space and provides ideal viewing positioning
- Pole mount design allows for hassle free height adjustability
- Cable management for clean finished look

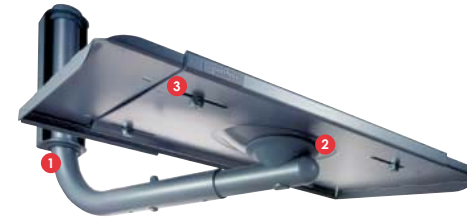
	LCT-A1B1H/C		LCT-A1B2H/C		LCT-A1B3H/C		LCT-A1B5H/C		LCT-A1B6H/C	
Screen size	15"-24" (38-61 cm)		15"-24" (38-61 cm)		15"-24" (38-61 cm)		15"-24" (38-61 cm)		15"-24" (38-61 cm)	
VESA® pattern	75/100 mm		75/100 mm		75/100 mm		75/100 mm		75/100 mm	
Mounting option	Bolt hole LCT-A1B1H	Desk clamp LCT-A1B1C	Bolt hole LCT-A1B2H	Desk clamp LCT-A1B2C	Bolt hole LCT-A1B3H	Desk clamp LCT-A1B3C	Bolt hole LCT-A1B5H	Desk clamp LCT-A1B5C	Bolt hole LCT-A1B6H	Desk clamp LCT-A1B6C
Adjustable pole height	—		—		14.4" (366 mm)		9.29" (236 mm)		14.3" (365 mm)	
Monitor tilt   Base arm tilt	+20°/-30°   20°/90°		+20°/-30°   20°/90°		+20°/-30°   —		+20°/-30°   —		+20°/-30°   —	
Extension arm tilt   swivel	0°/-90°   360°		—   360°		0°/-90°   360°		—   360°		—   360°	
Security	ACC918		ACC918		ACC918		ACC918		ACC918	
Max load	17.5 lb (8 kg)		17.5 lb (8 kg)		17.5 lb (8 kg)		17.5 lb (8 kg)		17.5 lb (8 kg)	

# STANDS AND CARTS



- 1. IDEAL VIEWING ANGLE**  
Incremental tilt of -2, 0 and +5 degrees, makes it simple to set multiple angles for preferred viewing
- 2. PERFECT SCREEN POSITIONING**  
Continuous vertical adjustment for desired viewing height
- 3. CENTRALIZED A/V COMPONENTS**  
Metal or tinted tempered glass shelf provides storage space for A/V components
- 4. SUPERIOR MOBILITY**  
4" (101 mm) swivel casters enable safe and easy maneuverability over various flooring surfaces and through doorways

# CRT MOUNTS



- 1. LIMITLESS SCREEN PLACEMENT**  
Dual swivel points allows for TV to be adjusted to nearly every viewing angle
- 2. OPTIMAL VIEWING ANGLE**  
Three individual lockable tilt angles at 0, 5 and 10 degrees
- 3. SIMPLE UNIVERSAL DESIGN**  
Expandable tray allows for the perfect mounting application in a wide array of TV sizes

## FPZ600 Flat Panel Stand



**COLOR:** Black

- Internal cable management conceals cables for a clean look
- Supports single or dual back-to-back flat panels
- Holds up to four screens (with accessory)\*
- Height adjustable
- Portrait or landscape orientation

## SR560M(G) / SR1M(G) Flat Panel Cart



**SmartMount™**

**COLOR:** Black

- Incremental tilt of -2°, 0° and +5° locks in ideal viewing angle
- Continuous vertical adjustment for perfect viewing height
- Internal cable management facilitates effortless routing of cords and cables for a clean, clutter-free look
- 4" (101 mm) swivel casters enable safe and easy maneuverability. Two locking casters ensure complete stability wherever the cart is placed
- 50 lb (22.6 kg) load capacity metal or tinted tempered glass shelf provides storage space for AV components
- SR1M(G) compatible with landscape to portrait accessory, RMI1 (dedicated adapter plate required)

## JCT-P2854E Adjustable Height Video Cart



**COLOR:** Black

- Multi-purpose cart for projectors, TVs or AV equipment
- Injection molded thermal plastic construction, will not warp, rust or crack
- Hard rubber ball bearing casters allow for easy movement over dissimilar floor surfaces
- UL-approved 3-outlet electric strip with 1.5 foot (457 mm) line cord and cord wrap bracket

Accessories ..... pages 22-23

\*ACC604

## PM1327(S)(W)



**COLOR:** Black, silver or white

- Plentiful adjustability to enable optimal viewing angle
- Expandable base tray for extended TV compatibility
- Includes safety strap to securely hold TV in place

## LWB models



**COLOR:** Black

- Plentiful adjustability to enable optimal viewing angle
- Attractive low-profile design for limited space installations
- Two-piece security tray with key lock

## JMW/JMS models



**COLOR:** Black

- Plentiful adjustability to enable optimal viewing angle
- Top and front roll out protection
- A/V component mounts may be added after TV is installed
- Mount may be installed in two sections allowing for a one person installation
- JMW models: Available in single or double wall arm, depending on size of TV
- JMS models: Complete support system, including a false ceiling plate to replace ceiling tile

OSHPD models available

Accessories ..... pages 22-23

Screen size	32"-60" (81-152 cm)	32"-60" (81-152 cm)	0"-32" (0-81 cm)
VESA® pattern	100, 200 x 100 and 200 x 200 mm <i>Additional non-VESA® screen adapter plates also available</i>	—	—
Adjustable mounting pattern	—	28.75" x 17.05" (SR560M(G) models) <i>Additional adapter plate required for SR1M(G) models</i>	—
Vertical adjustment	Continuous	Continuous	28", 44", 48" or 54"
Tilt   swivel	—	2°, 0°, +5°	—
Landscape to portrait	Yes	SR1M(G) models <i>RMI1 and dedicated adapter plate required</i>	—
Security	Yes	Yes	—
Max load	200 lb (90.7 kg) per screen <i>Up to four screens with Dual-Screen Cartridge Accessory (ACC604)</i>	150 lb screen (68 kg) 50 lb per shelf (22.6 kg)	300 lb (136 kg)
UL   TUV   GS	UL	UL	—

Screen size	13"-27" (33-68 cm)	19"-27" (48-68 cm)	13"-42" (33-106 cm)
Tilt   swivel	0°, 5°, 10°   180° (at wall plate), 360° (at tray)	10°   360° (at tray)	0-30°   360°
Security	—	Yes	ACC502
Max load	100 lb (45 kg)	125 lb (57 kg)	Single Wall Arm: 125 lb (57 kg) Double Wall Arm: 300 lb (136 kg) Ceiling Kits: 250 lb (113 kg)
UL   TUV   GS	UL	UL	UL

# ACCESSORIES

## CMJ455 Lightweight Suspended Ceiling Kit



COLOR: White

- Replaces a 2' x 2' (.6 x .6 m) ceiling tile or mounts above existing 2' x 2' (.6 x .6 m) or 2' x 4' (.6 x 1.2 m) ceiling tile to structural ceiling with tie wires
- Two-piece design offers five different points for mount attachment
- Includes tie wire supports, flush mount tube and offers two knockout panels for outlet boxes
- Unit has 1-1/2"-11.5 NPT fitting for attachment of extension column

Max load: 50 lb (22.7 kg)

## CMJ500 Lightweight Adjustable Suspended Ceiling Kit

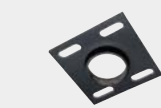


COLOR: White

- Mounts above 2' x 2' (.6 x .6 m) or 2' x 4' (.6 x 1.2 m) ceiling tile to structural ceiling with tie wires
- Includes tie wire supports, flush mount tube and offers two knockout panels for outlet boxes
- Allows 13.9" (353 mm) uninterrupted adjustment

Max load: 60 lb (27 kg)

## CMJ300, CMJ310 Unistrut® and Structural Ceiling Plate



COLOR: Black

- Attaches directly to standard Unistrut 1-5/8" x 1-5/8" (4.1 x 4.1 mm) or to solid structural ceiling
- Unistrut fittings and attachment hardware not included
- Unit has 1-1/2"-11.5 NPT fitting for attachment of extension column

Max load: 250 lb (113.6 kg)

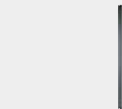
## PB-1 Plenum Box For CMJ450, 453, 455 and 500



COLOR: White

- Compatible with all of Peerless' false ceiling plates
- Simple lockdown with slideable lid and optional lockdown screw
- Mounting brackets allow for multiple attachment points
- 3" (76 mm) of lateral adjustment for precise placement
- 1/2" (13 mm), 3/4" (19 mm) and 1" (25 mm) knockouts to run conduit
- Optional internal knockouts for clean installations in any application

## EXT Models Fixed Length Extension Column



COLOR: Black or silver

- 1-1/2"-11.5 NPT schedule 40 pipe threaded on both ends. Notched for use with screw to provide safety and security
- Extension column lengths measure 3.5" (88 mm) longer than stated drop to provide finished drop length for various mounts i.e. EXT 101 measures 15.5" (393 mm)

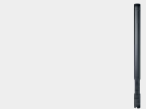
Max load: 1200 lb (544 kg)

Model	Drop*
EXT002(S)**	Flush
EXT006(S)	6" (15 cm)
EXT018(S)	18" (46 cm)
EXT101(S)	1" (.3 m)
EXT102(S)	2" (.6 m)
EXT103(S)	3" (.9 m)
EXT104(S)	4" (1.2 m)
EXT105(S)	5" (1.5 m)
EXT106(S)	6" (1.8 m)
EXT107(S)	7" (2.1 m)
EXT108(S)	8" (2.4 m)
EXT109(S)	9" (2.7 m)
EXT110(S)	10" (3.1 m)

\* Drop length applies to Jumbo 2000 mount installations

\*\* For projector installations only

## ADJ Models Adjustable Extension Column



COLOR: Black

- 1-1/2"-11.5 NPT schedule 40 pipe threaded on both ends. Notched for use with screw to provide safety and security
- Height adjustment at 1" (25 mm) increments
- Extension column lengths measure 3.5" (88 mm) longer than stated drop to provide finished drop length for various mounts i.e. ADJ012018 measures 21.5" (546 mm)

Max load: 900 lb (408 kg)

Model	Drop*
ADJ006009	6"-9" (15-23 m)
ADJ012018	12"-18" (30-46 m)
ADJ018024	18"-24" (46-61 m)
ADJ02023	2'-3" (61-91 m)
ADJ03005	3'-5" (91-152 m)
ADJ04006	4'-6" (122-183 m)
ADJ05007	5'-7" (152-213 m)
ADJ06008	6'-8" (183-244 m)
ADJ07009	7'-9" (213-274 m)
ADJ0810	8'-10" (244-305 m)
ADJ0911	9'-11" (274-335 m)
ADJ1012	10'-12" (305-366 m)

## ACC800, ACC850(S) Connector with Cord Management



COLOR: ACC800: Black  
ACC850: Black or silver

- 1 1/2" (38 mm) access hole for internal cord management
- Unit has 1-1/2"-11.5 NPT fitting for attachment of extension column
- Security screws included
- ACC800- One male and one female connection to provide internal cord management between extension column and mount or ceiling plate
- ACC850 - Two female connectors to provide internal cord management and join two extension columns to create maximum eight of 20" (6 m)

Max load: 300 lb (136 kg)

## ACC050 Extension Column Stabilizer Kit



COLOR: Black

- Reduces unwanted swaying that may occur with long drop lengths
- For use with 1-1/2" schedule 40 extension columns

## ACC830 Side-to-side Adjuster



COLOR: Black

- 4" (101 mm) of radial side-to-side adjustment
- May be used with extension column or projector wall arm
- Includes Flush Mount Tube, EXT002

Max load: 50 lb (22.7 kg)

## ACC918, ACC919 Security Fasteners for SA730P, SP730P, SA740P and SP740P Model Wall Arms



COLOR: Black

- Screen-side security fasteners for their resistance

ACC918: For SA/SP730P Wall Arms  
ACC919: For SA/SP740P Wall Arms

## ACC925 Security Fasteners for SA745PU, SA750PU & SA760PU Wall Arms



COLOR: Black

- Screen-side security fasteners for their resistance

## ACC502 Security Fasteners



- M10 penta-pin screws for Jumbo Mounts
- Kit includes installation tool

## ACC215, ACC415, ACC615 Metal Stud Fastener Kit



- For mounting Peerless wall mounts to 25 gauge or heavier metal studs

ACC215: 2 togglers  
ACC415: 4 togglers  
ACC615: 6 togglers

## ACC575(-S)(-W) Threaded Connector Accessory



COLOR: Black, silver or white

- 1.5" (38 mm) threaded connector used in ceiling installations to enable use of multiple ceiling applications such as suspended ceilings, wood joists, concrete, structural, I-Beam, Truss
- Threaded adapter designed to provide mounting compatibility between Paramount LCD and projector mounts, PRS and PRG Projector Mount Kits

Max load: 80 lb (36 kg)

## PS200 Adjustable Shelf for A/V Components or Microwaves

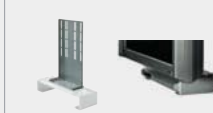


COLOR: Black or silver

- Versatile design ideal for stacking multiple A/V components or supporting a microwave
- Adjustable width up to 18.44" (468 mm) and depth range of 14.86" (377 mm) to 23" (584 mm)
- Snap-on cover hides wall plate and mounting hardware
- Adjustment knobs allows for easy leveling of components
- Embossed arms with screw holes secure components to shelf

Max load: 100 lb (45 kg)

## ACC931/ACC932 A/V Component Mount Connector



COLOR: Black or silver

- Connects Peerless articulating, pivot and ceiling mounts to A/V Component Mounts
- Screw attachment location provides theft-deterrence when A/V component is installed
- Can be installed without removing mount from wall
- Height adjustability allows A/V component to sit flush with TV

Max load: 30 lb (13.6 kg)

## VPM/SVPM/DS models Adjustable A/V Component Mounts



COLOR: Black

- Adjustable height and width
- Units can be stacked without additional accessories
- Accommodates most front-loading A/V components
- Security versions available

Max load: 50 lb (22.7 kg)

## WSP425/445(W) Metal Stud Wall Plates - Double Stud



COLOR: Black or white

- For use on 25 gauge or heavier metal studs to span load between two studs with 16" or 24" (406 or 609 mm) centers
- Can also be used on wood studs
- Compatible with most Peerless single wall arms
- Offered with or without electrical knockouts

Max load: 125 lb (57 kg)

WSP425/WSP425W:  
16" (406 mm) centers with knockouts  
WSP445/WSP445W:  
24" (609 mm) centers with knockouts

## WSP716/724(S)(W)(GB)(GS) Metal Stud Wall Plate - Triple Stud



COLOR: Black, High-Gloss Black, Silver, High-Gloss Silver or White

- Compatible with PLA Series Wall Mount
- Designed to span the load between three studs
- Offered with electrical knockouts

WSP716 Models: 16" (406 mm) centers  
WSP724 Models: 16", 20", 24" (406, 508, 609 mm) centers

Max load: 200 lb (90.7 kg)

## WSP745(-S) Metal Stud Wall Plate for SA745P models



COLOR: High gloss black and high gloss silver

- For use on 25 gauge or heavier metal studs to span load between two studs with 16" (406 mm) centers
- Electrical knockout covers included

Max load: 110 lb (49.8 kg)

## WSP490(S) Metal Stud Wall Plate for SP740P model - Double Stud



COLOR: Black or silver

- For use on 25 gauge or heavier metal studs to span load between two studs with 16" (406 mm) centers
- Offered with electrical knockouts

Max load: 80 lb (36.2 kg)

## ACC314 Laptop Arm



COLOR: Black

- Attaches directly to post of SR series carts
- Vertical height and 180° swivel adjustability
- Quick-release knob for easy height adjustment

Max load: 10 lb (4.5 kg)

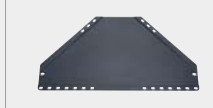
## ACC320 Electrical Outlet Strip With Cord Wrap



COLOR: Black

- For use with SR Flat Panel Cart series
- Includes outlet strip with three outlets
- 20" (6 m) long cord with hanger clamp and cord wrap

## ACC342(-S) Corner Mount Shelf



COLOR: Black

- Creates enclosed compartment when mounted at the bottom of corner mount
- Top mounting provides open access to A/V equipment

Max load: 25 lb (11 kg)

## PLP-UNL (-S)(P)(P-S) Screen Adapter Plate



COLOR: Black

- Universal plate fits virtually any 32" to 60" (81-152cm) screen
- Compatible with most Peerless flat panel mounts (mount sold separately)
- Security models available provide effective theft deterrence

Max load: 200 lb (90.7 kg)

peerless®